

SUGAR project

The City of Prague Introduction

*JPE Prague & Ústí nad Labem
17th of January 2011, Prague*

City of Prague (1)

- Geografically in the centre of Europe
- Situated in central Bohemia on the Vltava River
- 280 km from Berlin (Germany) and 250 km from Vienna (Austria)
- Highest elevation: 399 m (1,309 ft)
- Spread over nine hills



City of Prague (2)

- **Population: 1 254 317 inhabitants**
- **Density of population: 2 517 pers./ km²**
- **Area: 496 km²**
- **The capital and largest city of the Czech Republic**
- **Service-oriented industry, educational, business and cultural centre**
- **Residence of the Charles University - founded in 1348 (the oldest university in Central and Eastern Europe)**



City of Prague (3)

- The extensive historic center of Prague has been included in the UNESCO list of World Heritage Sites
- Famous turistic destination - almost 1/2 of the national income from tourism is spent in Prague
- From the overall number of tourists (6, 08 mil. Tourists) 63 % visits Prague



City of Prague (4) - Administration

- Municipality of Prague - Magistrate of the Capital City of Prague
- 22 administrative districts engaged in the public administration (Praha 1 – 22)
- 57 municipal districts (self-governing)
- The most populated district has 130 000 inhabitants, the least populated one has 261 inhabitants



City of Prague (5) – Basic economic data

Basic economic data:

- **Gross domestic product: 35 810 EUR million**
- **Gross domestic product per capita: 28 810 EUR**
- **Registered unemployment rate: 4,07 %**
- **Job opportunities cca: 800 000**
- **Number of business entities: 480 000**
- **Prague has 2 official industrial zones with total area of 130 ha**
- **Foreign investors are mainly concentrating in services, ICT development and software engineering.**
- **Exampless of foreign investors (2009):**
 - DHL, e-BAY, Honeywell, IBM, Logica, SAP, Siemens, Sun Microsystems, GE Aviation, Hinduja, Hyundai, Latecoere, Valeo, Skype

City of Prague (6) - Transport

• Total road network		3 874 km
• All motor vehicles		914 224
• Passenger cars		683 295
• Public transport network	Tram	141 km
	Bus	686 km
	Underground	54 km

2009 numbers

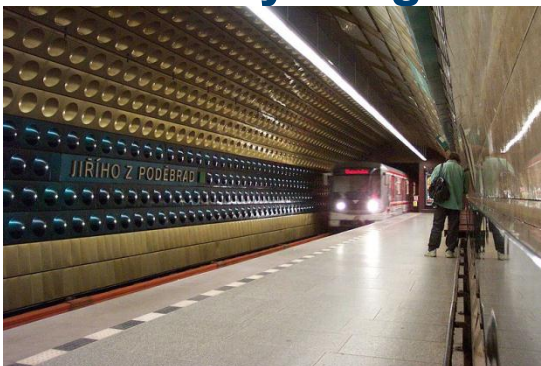
ŠIRŠÍ VZTAHY - SILNIČNÍ A ŽELEZNIČNÍ SÍŤ

0 2 4 6 8 10 km



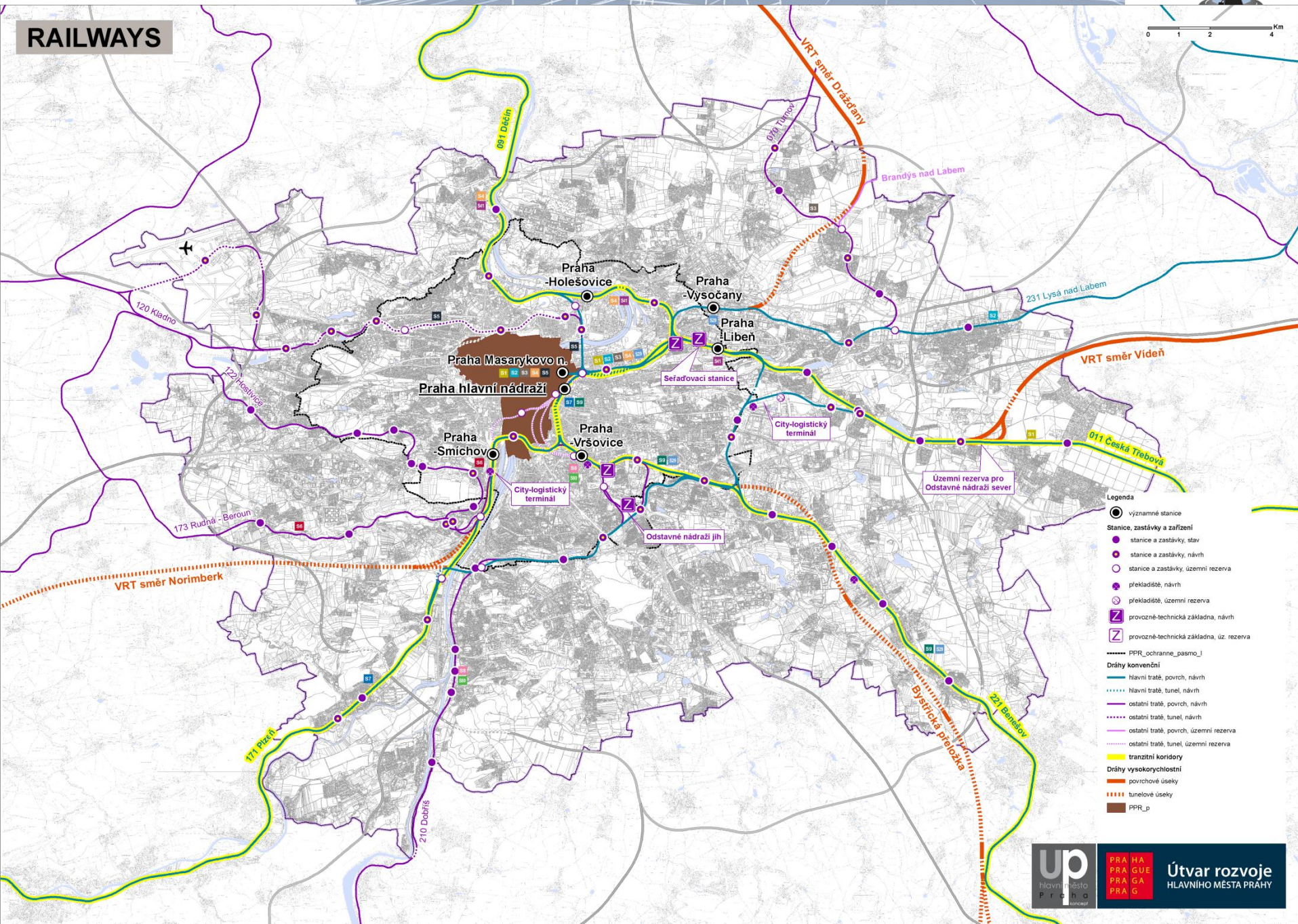
City of Prague (7) - Transport

- **Railway transport** – the City is an important railway junction situated on the main railway corridor connecting Vienna - Berlin – Hamburg;
- **Road transport** – the main junction in CZ
- **River transport** – Prague is connected with harbours in North and Baltic Seas
- **Urban public transport** (metro, trams, buses) and cycle transport
- **Served by Prague Ruzyně Airport**



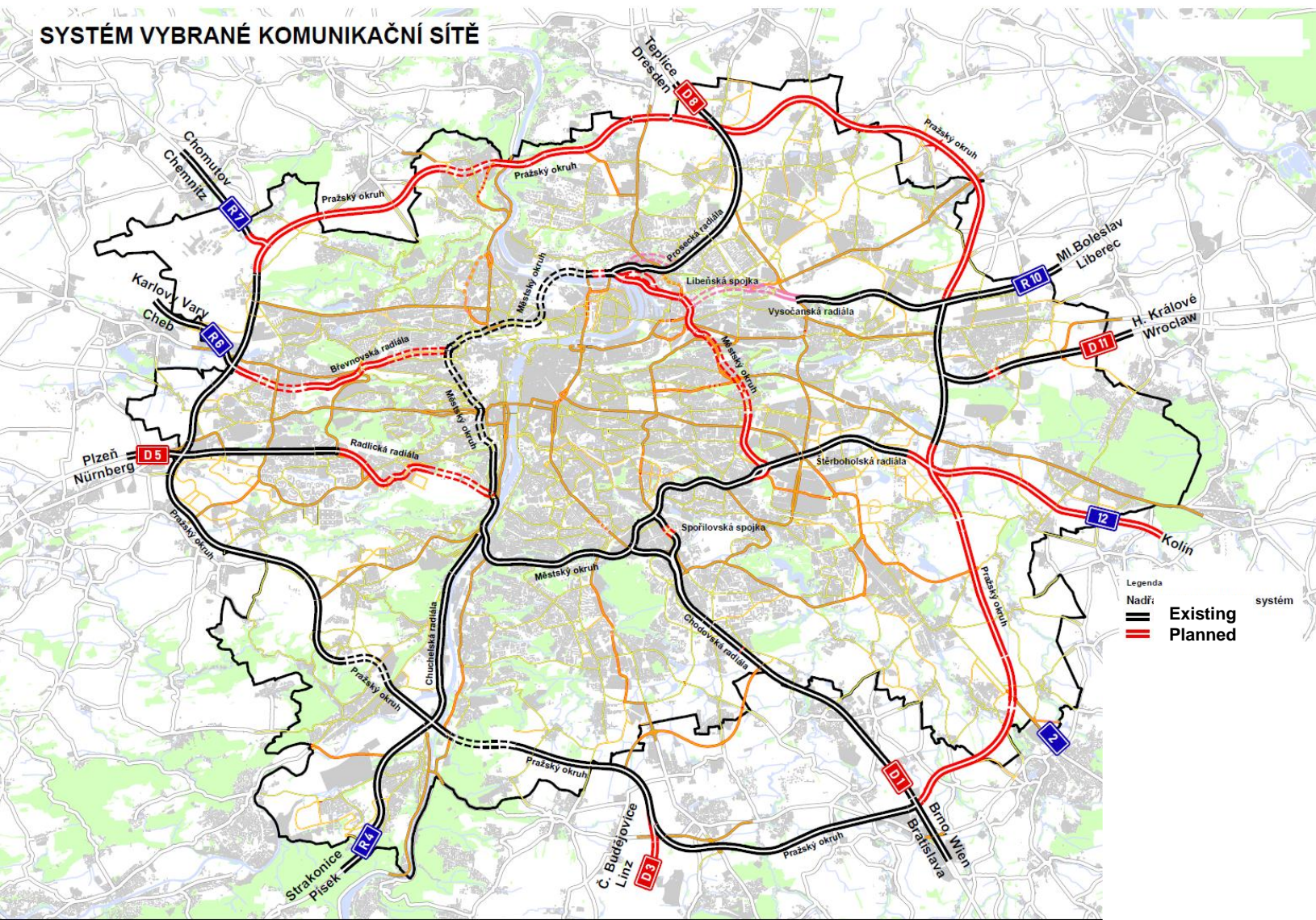
RAILWAYS

0 1 2 4 Km

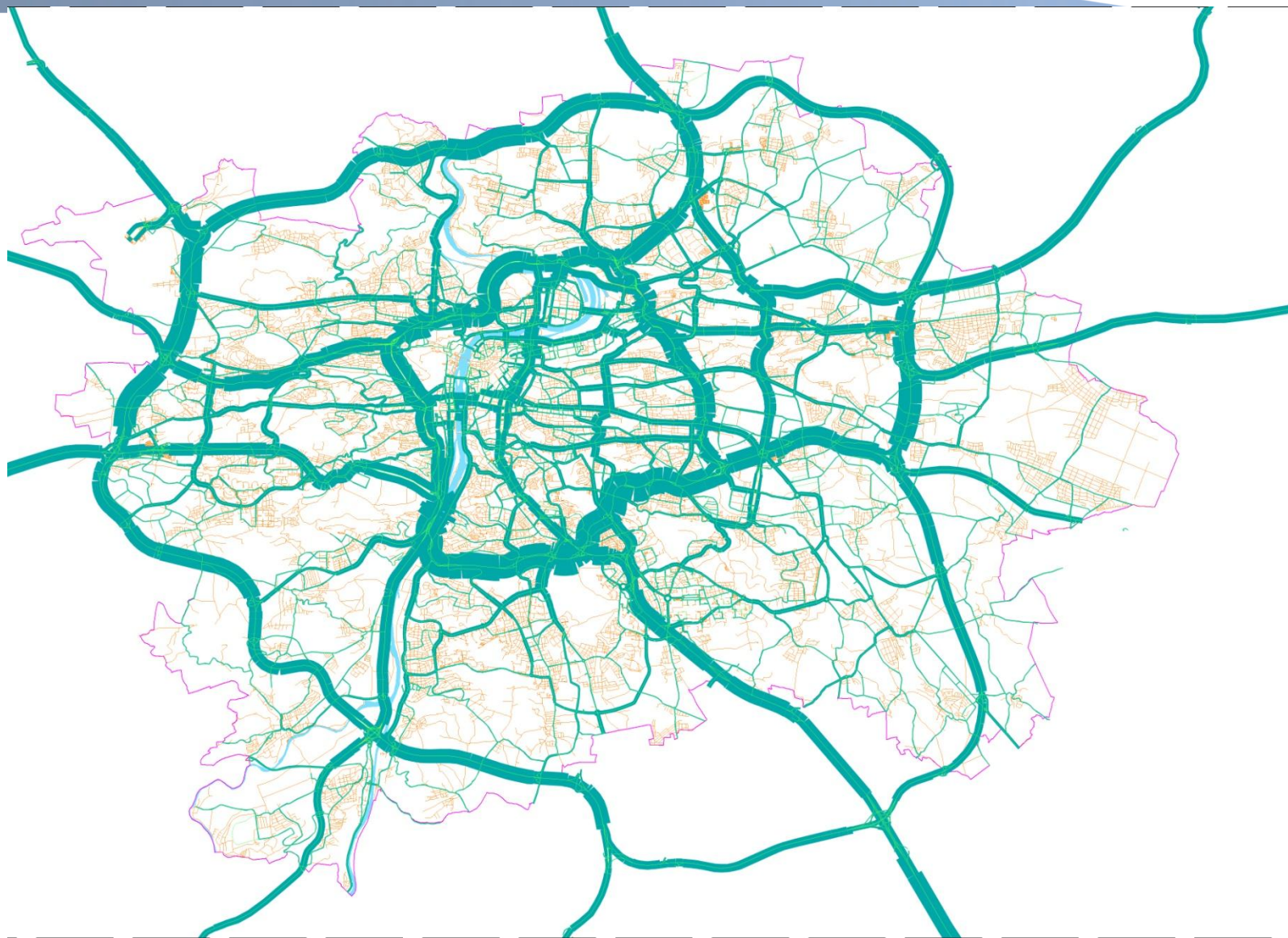


City of Prague (9) – road network

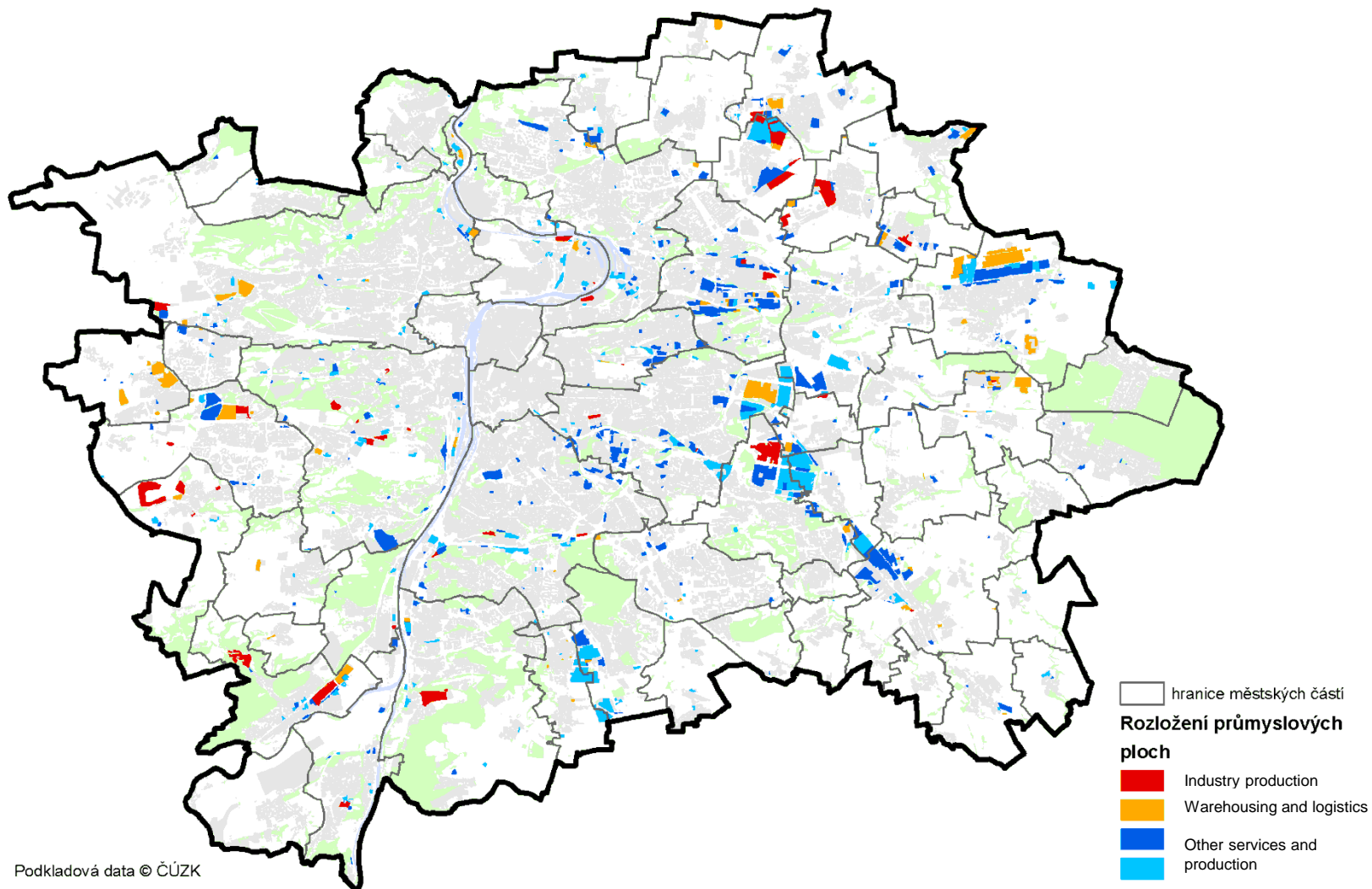
SYSTÉM VYBRANÉ KOMUNIKAČNÍ SÍTĚ



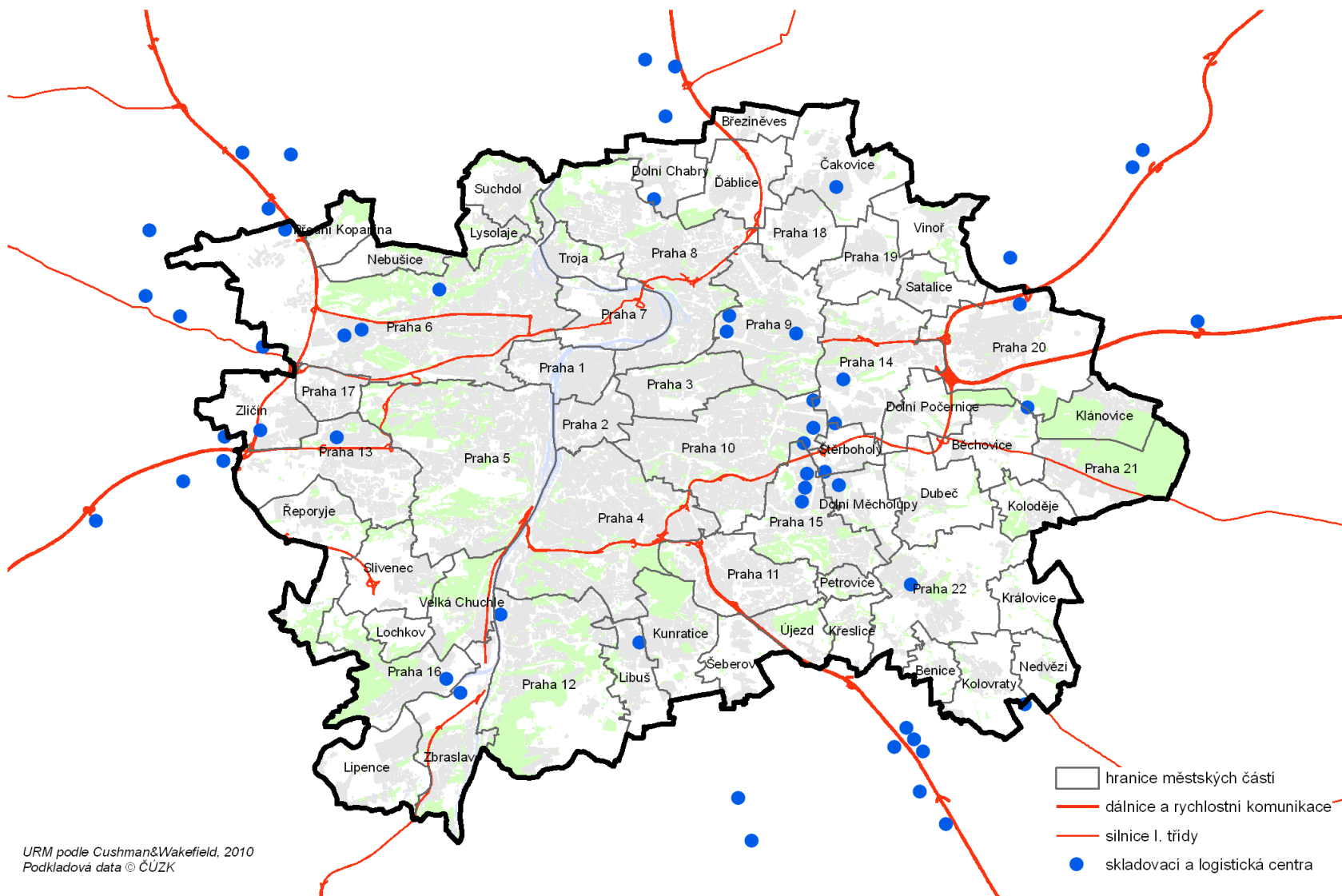
City of Prague (9) – traffic volumes



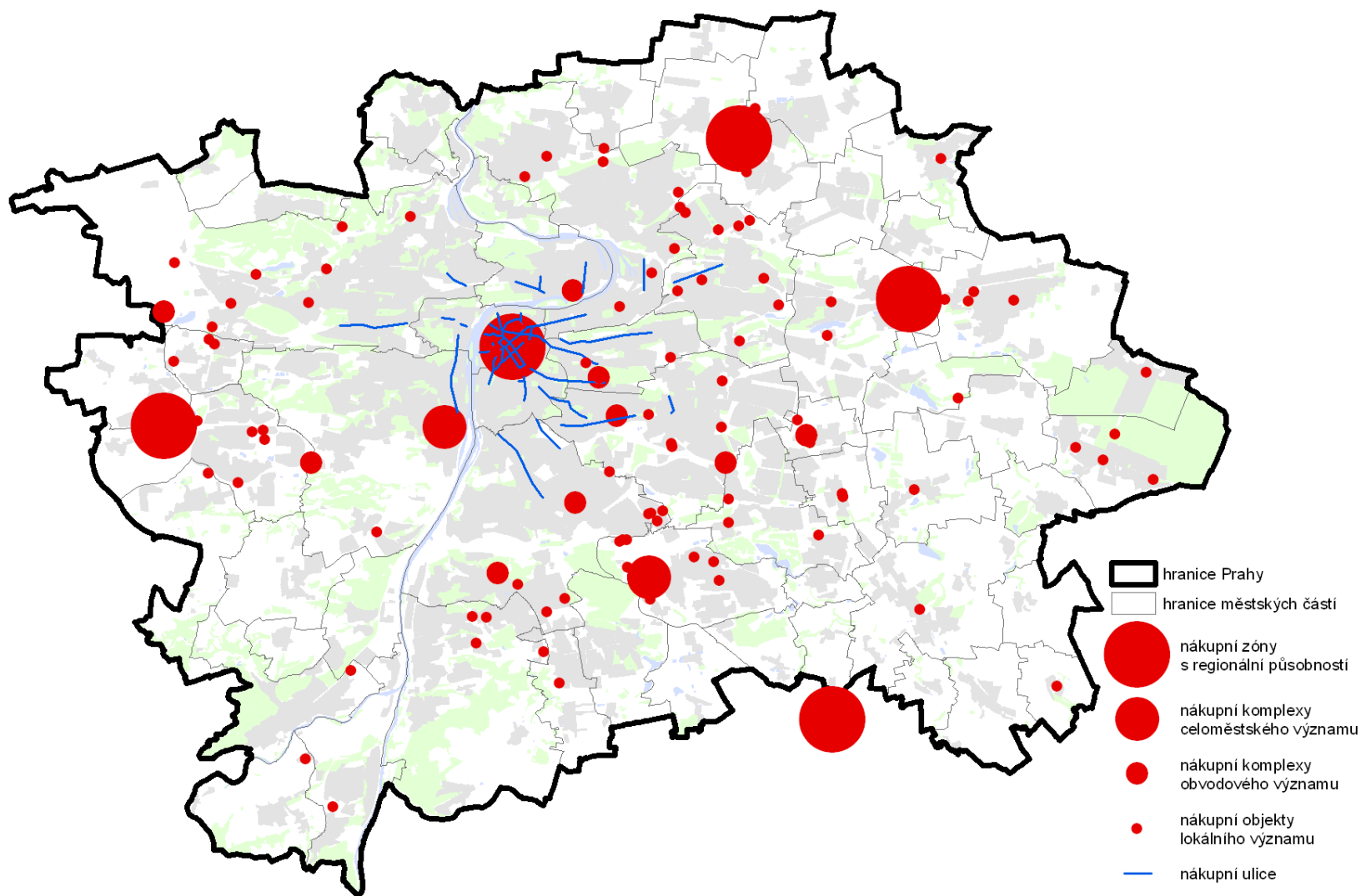
City of Prague (8) Spatial plan - industry



City of Prague (9) – Logistics



City of Prague (10) - retail



City of Prague (11) – retail

